

greasemaster³

MASTERLUBE SYSTEMS LTD, Unit 15, Dabble Duck Ind. Est., Shildon, Co. Durham, DL4 2QN
Tel . + 44 1388 775584 Fax: +44 1388 778893 Web: www.bignall.co.uk

Greasemaster Pump Element

Specification

Weight	335grms
Grease Specification**	Lithium NLGI 2**
Output Pressure	Adjustable up to 200bar***
Delivery	0.2cc +/- 15%
Temperature Range	+40°C / -15°C

NOTE

- *All tests carried out at ambient temp. to air
- ** <http://www.bignall.co.uk/masterlube/grease-recommendations.asp>
- *** Do not operate pump without 190 or 200 Bar pressure relief valve

Maintenance

The **Greasemaster** pumping element is unique in being provided with a replaceable hardened steel NRV and seat. These can be replaced if:

1. The pump delivers but will not build or hold pressure.
2. The lower carcass is full of grease, but the element will not pick up grease.

Replacing The Pumping Element

First clean the surrounding face of the housing.

Remove the outlet pipe.

Unscrew the banjo bolt and remove the banjo collar and relief valve.

Unscrew the element from the pump making sure that no dirt enters.

Reverse the process to re-fit.

Replacing The NRV Valve And Seat

Thoroughly clean the element in a suitable solvent, mount the element in a vice and remove the NRV Lock nut and housing with a 5mm hex key. Fit 'O' ring (10x 2) to non-return valve – seat.

Apply grease.

Press non-return valve into element body. (Ensure that seat has 'O' ring facing down).

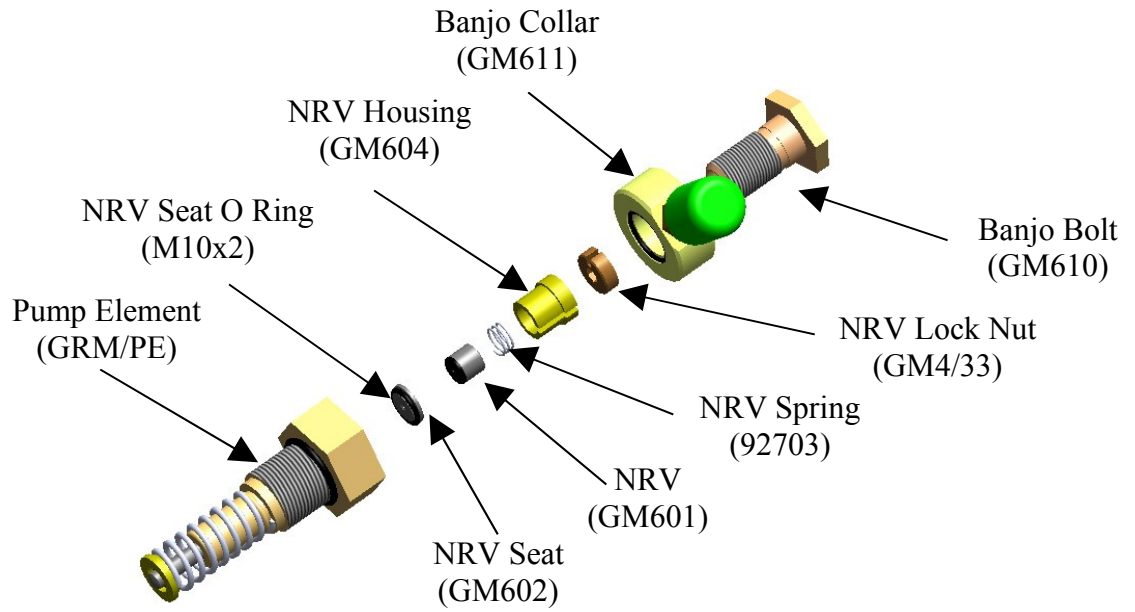
Check fit of valve in housing. The NRV should move freely in the housing.

Replace parts if necessary.

Pack the housing with grease and assemble first the spring and then the valve into the housing.

Angle element over the valve housing assembly carefully screwing into place (ensure that the hexagonal key does not disturb valve & spring) tighten valve housing.

Tighten down the NRV Lock Nut.



Spares Parts

Code	Description	Code	Description
GRM/PE	GM3 pump element assembly	GM610	Banjo Bolt
PRV190	Pressure Regulator Valve @ 190 BAR	GM4/33	NRV Lock Nut
PRV200	Pressure Regulator Valve @ 200 BAR	GM601	NRV Valve
92703	Primary NRV Spring	GM602	NRV Seat
M10 x 2 O Ring	NRV Seat O Ring	GM604	NRV Housing