

# greasemaster3

**Greasemaster3** is purposely designed to provide grease to single line progressive distribution systems.

Grease is delivered through a unique filtration process which protects the system it feeds from contamination. Robust construction and heavy-duty pump station to power automatic grease systems on machines working in tough environments.

Grease up to NLGI 2\*\* are delivered to bearings in pre-determined ratios by means of **blocmaster** distribution blocks Blocmaster : <http://www.bignall.co.uk/masterlube/blocmaster.asp> .

Optional timer controls are available. GT3x/GT1x <http://www.bignall.co.uk/masterlube/greasecontrol.asp>

The timer adjusts the output of grease delivered by controlling the pump on and off time.

GT3x timers monitor system function using a micro-switch and alarm feature.

**Greasemaster3** may be filled by standard (54mm Dia.) grease cartridge or by hand grease gun.

## SPECIFICATION

Weight (Empty)	6.2Kg (5ltr Capacity)
Capacity	5Ltrs Nominal (7Ltr Available on Request)
Grease Specification**	Lithium NLGI 2**
Voltage	12v/24v dc Polarity Protected
Current	2A Max
Output Pressure	Adjustable up to 200bar***
Delivery	12v ~ 2.5cc / 24v ~ 6.0cc
Temperature Range	+40°C / -15°C
Filling	Grease Nipple / Cartridge Fill

## NOTE

- \*All tests carried out at ambient temp. to air
- \*\* <http://www.bignall.co.uk/masterlube/grease-recommendations.asp>
- \*\*\* Do not operate pump without 190 or 200 Bar pressure relief valve

On receiving the pump, fill the reservoir to within 15mm / ¾" of the top of the reservoir tube with good quality grade II lithium base grease\*\*.

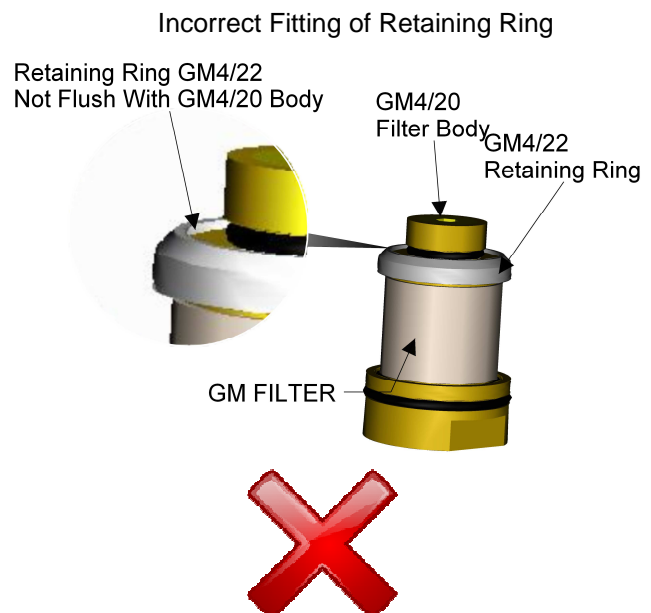
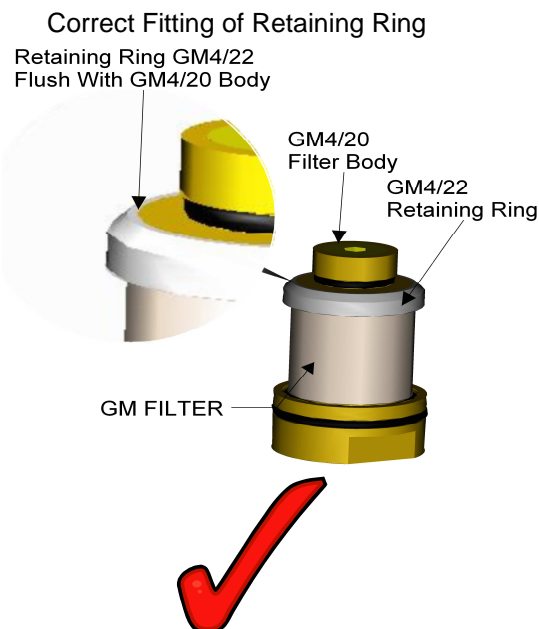
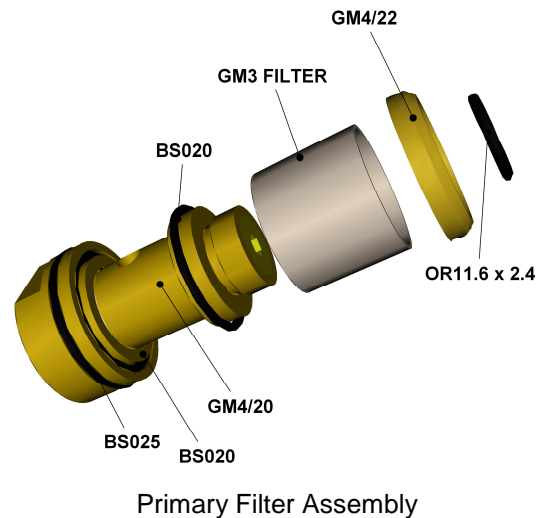
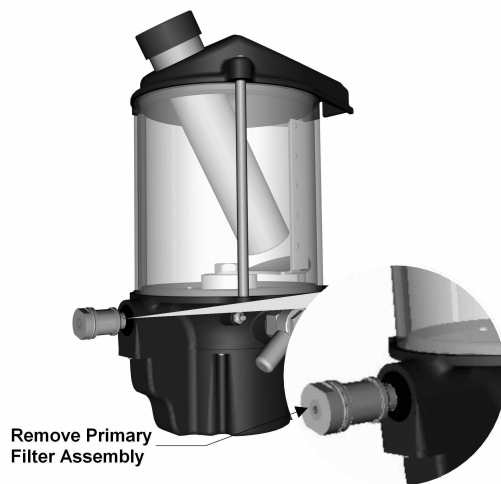
Connect the pump to a suitable power supply using suitable cable (**RED - POSITIVE +ve /BLACK - NEGATIVE -ve**). Ensure specification of cable is sufficient to prevent voltage loss along its length.

## MAINTENANCE

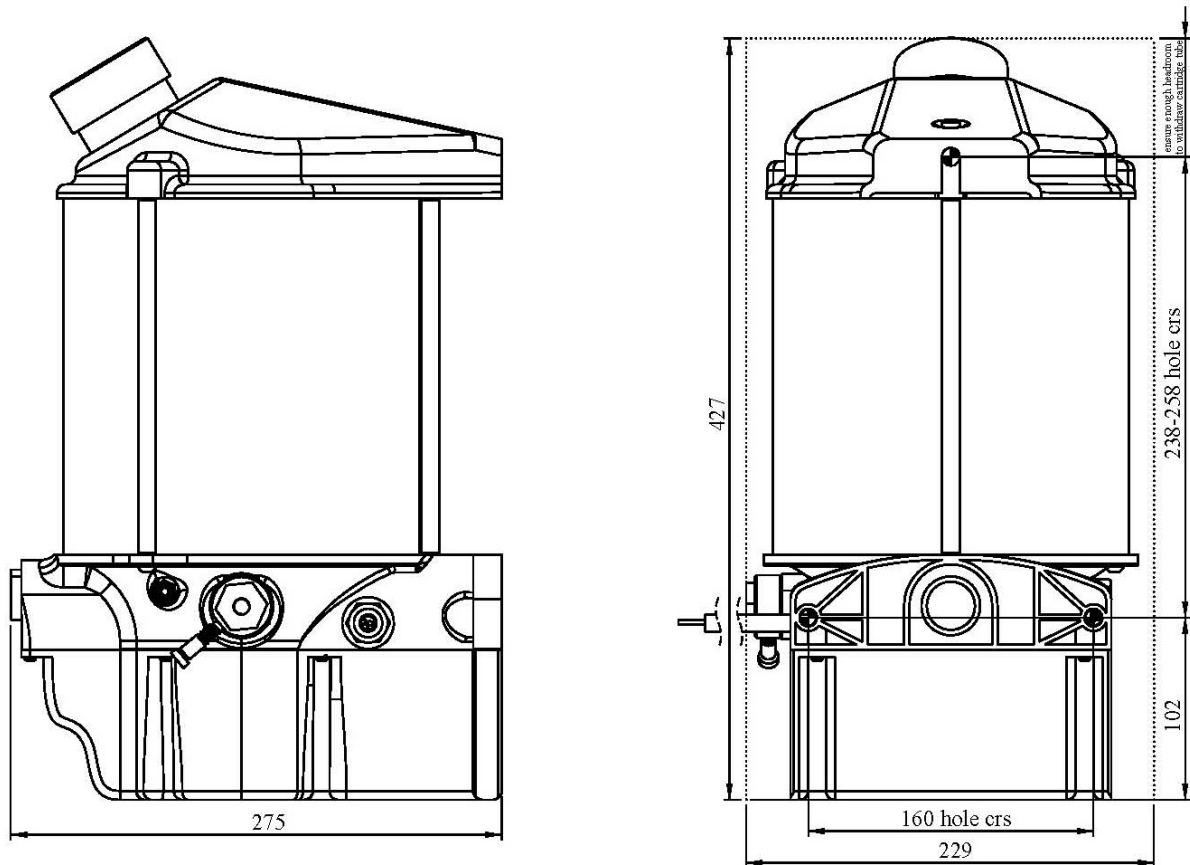
Fill the grease pump regularly and avoid long periods of running the pump empty. *Do not overfill*. Keep the reservoir tube clean on the outside so that levels can be observed. Clean the filter every 2500 hours of machine (not pump) operation. If contamination is noted, this period should be altered accordingly

## Filter Maintenance

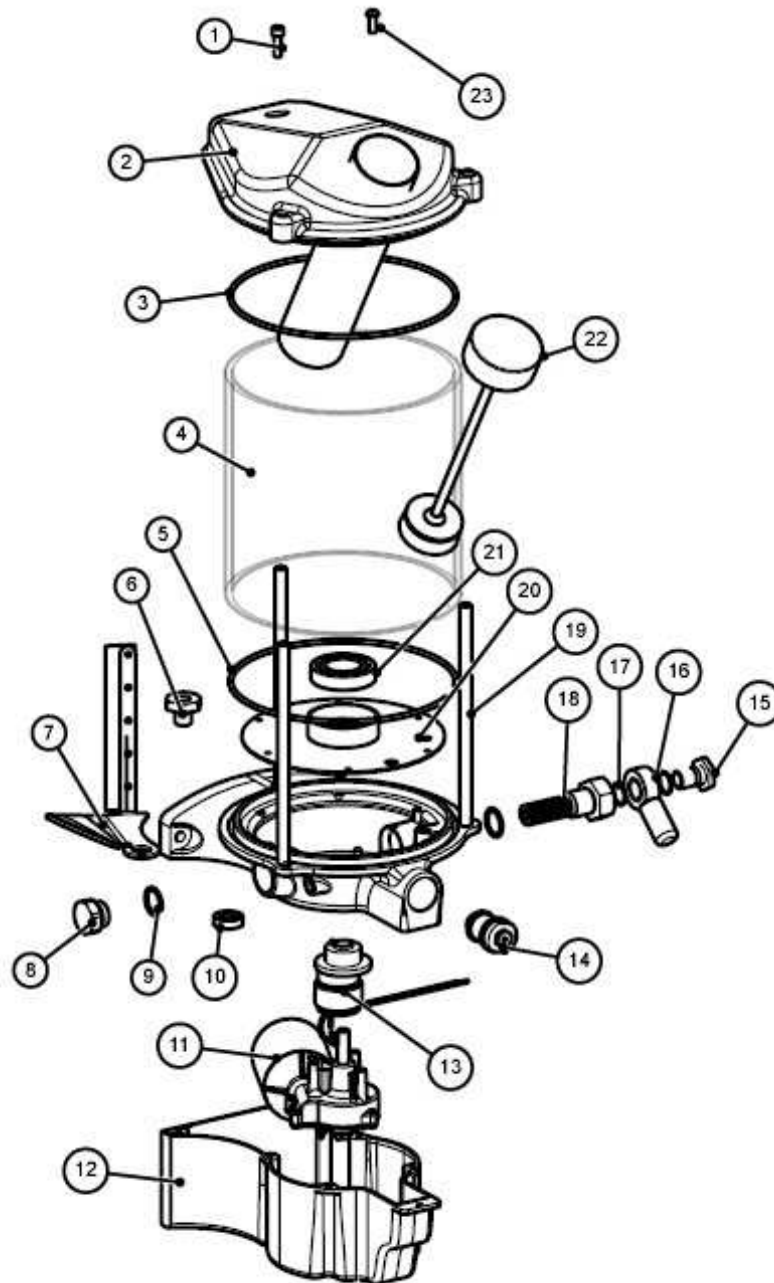
1. Remove filter cartridge from base using a 1" A/F open ended Spanner / Adjustable Spanner
2. Unscrew Retaining Ring, remove GM3 Filter.
3. Wash the filter in a suitable solvent/Paraffin Bath and blow away any remaining debris if necessary. Replace the filter mesh if it is damaged with Part No. GM3 FILTER
4. Refit GM3 Filter.
5. Screw Retaining Ring onto housing. Ensure that the Retaining Ring is in correct position (See Diagram below.)
6. Refit Filter, *Do Not Over tighten*



## General Dimensions



## Spare Parts



	Code	Description		Code	Description
1	M6X50BH	50mm Reservoir bolt	13	Gm3/07	Cam
2	Gm3/28	Lid assembly	14	Gm4/30	Filter Assembly
3	BS206	Reservoir top 'o' ring	15	Gm6/10	Banjo bolt
4	Gm3/18	Reservoir	16	Gm6/11	Banjo collar
5	OR180x4	Reservoir bottom 'o' ring	17	OR16X2	Banjo 'o' ring x 2
6	Gm3/09	Cam knurled bolt	18	Gm6/02	Pump Element
7	Gm4/06	Reservoir wiper arm	19	Gm3/10	Reservoir rod
8	Blank plug	Carcass blank	20	Gm3/11	Cam cover plate
9	BS018	Outlet port 'o'ring X 2	21	6006	Cam bearing
10	10x26x7	Motor oil seal	22	Gm3/29	Plunger assembly
11	9900278	24v motor	23	M6x16BH	16mm reservoir bolt x 5
12	Gm3/12	Motor cover			

# Warranty

MASTERLUBE SYSTEMS LTD. (The Company) guarantees its products to conform to their specifications and to be free from defects therein due to faulty workmanship or materials for a period of twelve (12) months from the date of delivery to the purchaser or from the documented date of installation which shall in no event be more than six (6) calendar months from the date of delivery.

There are no other warranties express or implied including but not limited to the warranties of merchantability and fitness for the particular purpose.

Some states do not permit the limitations of warranties.

The Company shall not be liable for any damages resulting in whole or in part, directly or indirectly, as a result of any misuse, accident, negligence, or improper installation or adjustment.

The Company shall not be bound by or be liable for any affirmation of fact, promise, representation or inducement made by any agent, distributor, or reseller which is not embodied in this agreement.

In no event shall the company be liable for damages, regardless of the form of action, or nature of the claim, exceeding the costs of the products. In no event shall the company be liable for loss of profit, indirect, incidental, special, consequential or other similar damages arising out of the use of the products, even if the company has been advised of special circumstances of the customer or the possibility of such damages.

In any event the customer's sole and exclusive remedy shall be the repair or replacement of the product.

MASTERLUBE SYSTEMS LTD.  
UNIT 15, DABBLE DUCK IND. EST.  
SHILDON  
CO. DURHAM  
DL4 2QN  
UK  
TEL:+44(0)1388 775584  
FAX:+44(0)1388778893  
WEB: [www.bignall.co.uk](http://www.bignall.co.uk)